



UNISIGN SELF SERVICE FAMILY



selfservice.unisigndisplay.com



hello@unisigndisplay.com



[unisignds](https://www.instagram.com/unisignds)



UNISIGN DIGITAL SIGNAGE & DISPLAY SOLUTIONS

Unisign is a technology and service provider company that develops innovative technologies and high value-added products for its customers and solutions that will meet their needs. Operating since 2005 with its knowledge and experience in digital signage, Unisign provides high-quality and effective services to the industry by developing innovative technologies and high value-added products that meet customer needs.

As the leading brand in Turkey in the field of Digital Signage and Display Technologies, with an annual production capacity of over 25,000 units, Unisign continues to pioneer the sector with custom solutions and R&D investments tailored to customer requirements.

Unisign-branded digital displays, developed by Unisign engineers and supported by TÜBİTAK TeknoGirişim, are currently used at more than 20,000 locations in Turkey and in over 30 countries worldwide, serving as the most effective communication channel for numerous organizations



SAMSUN

MERSİN

VAN

EDİRNE

MERSİN

Self Order Kiosks

Provides an innovative solution for businesses seeking to enhance customer experience and streamline operations. With its intuitive interface, customers can easily browse menus, customize orders, and complete transactions at their convenience. Revolutionizes the way businesses interact with their customers, providing a modern and efficient self-service solution.



Browse Options



Effortless Transactions



Contactless Payments



Quick Service



EDIRNE

KSSA270EA / KSSA320MA

Ergonomic Excellence

The Edirne Self-Service Kiosk is designed with user comfort and accessibility in mind. Its straightforward touchscreen interface ensures a seamless interaction experience for users of all heights. This thoughtful design enhances customer satisfaction and ensures your services are accessible to everyone.

Multifunctional Marvel

The Edirne model is more than just an ordering system; it's a versatile tool for customer engagement. Its high-resolution display can switch between interactive menus, promotional content, and digital signage, maximizing the kiosk's value throughout the day. The integrated scanner adds functionality for loyalty programs, coupons, and even ID verification when needed.



- 1 - Camera**
- 2 - Proximity Sensor**
- 3 - Thermal Printer**
- 4 - Barcode Reader**
- 5 - POS Device**
- 6 - Status Light**

Smart Integration

The Edirne Self-Service Kiosk seamlessly integrates with your existing POS and inventory management systems. Real-time updates ensure menu availability is always accurate, while detailed analytics provide valuable insights into customer preferences and buying patterns. This intelligent integration helps you make data-driven decisions to optimize your offerings and operations.

Robust and Reliable

Built to withstand the rigors of high-traffic environments, the Edirne kiosk features a durable construction that ensures longevity and minimal downtime. Its sleek design houses powerful hardware capable of processing complex transactions quickly and efficiently. The built-in thermal printer and multiple payment options keep transactions smooth and customers satisfied.



Represents user-friendly design



Symbolizes versatile capabilities



Indicates robust construction



Thermal Printer



Barcode Reader

PANEL	KSSA270EA	KSSA320MA
Panel Size	27"	32"
Resolution	1080 x 1920	1080 x 1920
Brightness (Typ.)	300 cd/m ²	400 cd/m ²
Contrast	1000:1 (Typ.) (TM)	1200:1 (Typ.) (TM)
Viewing Angle (H x V)	178° x 178°	178° x 178°
Response Angle (G-to-G)	14 ms (G to G)	8 ms (G to G)
Active Display Area (mm)	597.89 (H) x 336.31 (V)	698.40 (H) x 392.85 (V)
TOUCH SCREEN		
Touch Technology	Projected Capacitive	
Touch Points	10 points Multi-touch	
Glass Hardness	6H (min.)	
INTERNAL PLAYER (OPTIONAL)		
CPU	Quad Core	
RAM	4GB	
HDD	32GB	
OS	Android 11	
I/O	HDMI, USB, ETHERNET,WIFI	
POWER		
Power Requirement	AC 100 - 240 V~ (+/- 10 %) 50/60 Hz	AC 100 - 240 V~ (+/- 10 %) 50/60 Hz
Power Consumption (Avg.)	22W	47W
Standby Mode	<0,5W	<0,5W
OPERATION		
Operation Life	7/24 - 50.000 hours	
Working Conditions	Operation Temp. : 0~ 50 °C / Storage Temp. : - 20~60 °C	
Humidity	10 ~ 80%	
DIMENSIONS		
Unit Size(mm) (w x h x d)	1089 x 485 x 150	1200 x 550 x 150
Unit Package Size (mm)	1160 x 520 x 320	1270 x 620 x 320
Product Weight(kg)	40	45
Package Weight(kg)	45	50
Stand Size (mm)	698 x 260 x 105	587 x 300 x 105
Stand Package Size(mm)	780 x 350 x 470	670 x 210 x 470
Stand Weight(kg)	22	25
ACCESSORIES		
Audio (optional)	8Ω, 5W x 2	
Thermal Printer	80mm	
1D/2D Barcode	640x480p, 30times/sec	
OPTIONAL		
Floor Stand & Logo & Brand Color Customization		
OTHER (Included in Package)		
Easy Installation Guide, Warranty Document, Power Cable		

KSSA270EA / KSSA320MA

27"



32"



***in milimeter**

RGB LED Bluetooth 5.0 Active NFC



Ultra Fast Update 10 Years Battery Life Multicolor e-ink



1.8" Screen



2.9" Screen



4.2" Screen



5.9" Screen

5.8" Dual Screen



7.5" Screen



10.2" Screen



13.3" Screen



Battery Operated



Eco-Friendly



High Investment return



Gain Customers





19" LCD



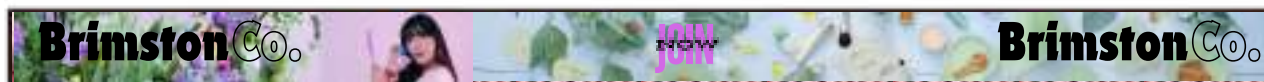
24" LCD



28" LCD



37" LCD



47" LCD



35" LCD



23.1" LCD



SINGLE & DOUBLE SIDE OPTIONS



43" - 55"
WINDOW SERIES



Duplex Use



High Brightness



Built-in Android OS



Plug and Play Content

C KIOSK 22" - 27" - 32"
INTERACTIVE DESK



Integrated with POS Systems



Interactive Touch Screen



Customizable Themes



43" - 49"
BATTERY TOTEM



Dynamic Content



Enhanced Visibility



Remote Management



Resistance to Weather Conditions

MOBILE USAGE



49" - 55"
OUTDOOR WALL DISPLAY



Customizable Themes



High Brightness



Energy Saving



Easy Assembly



DOUBLE SIDED DESIGN



43" 49"
DUAL DIAMOND TOTEM



Duplex Use



Resistance to Weather Conditions



High Brightness



Dynamic Content



49" - 55"
H TOTEM



High Brightness



Enhanced Visuality



Remote Management



Resistance to Weather Conditions



FLEXIBLE SIZE OPTIONS

LED HERO



High Brightness



Modular Design



3D Communication



Aesthetic Design



LED SHOWCASE DISPLAY



Energy Saving



High Brightness



24/7 Usage



Modular Design



FLEXIBLE SIZE OPTIONS

LED CUBE



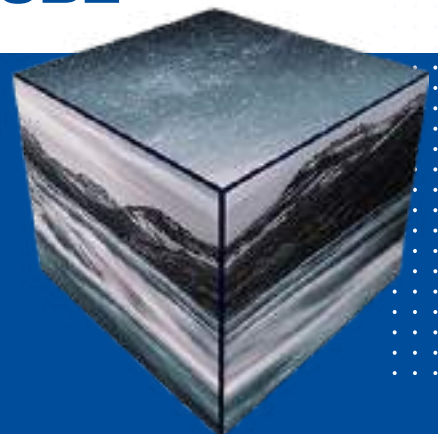
Modular Design



3D Communication



Aesthetic Design





43" - 49" FLIP LCD TOTEM



Energy Efficiency



Language Support



Customizable Product Design



Scheduleable Content Support



27"-32"-43"-55"-65" O TOTEM



Customizable Themes



Weather Resistant



Interactive Touch Screen



FLEXIBLE SIZE OPTIONS VIDEOWALL



Cost Efficiency



Remote Management



Various Positioning Options

FLEXIBLE POSITIONING OPTIONS SURVEY MANAGEMENT



Notification Collection



Customer Count Tracking



Integration Capacity



UNISIGN SOLUTIONS

LIFT & LEARN

Lift & Learn is an interactive solution that automatically displays information when customers pick up products. It enriches the shopping experience and increases sales. It is an ideal technology for maximizing interaction and customer satisfaction in the retail industry.



Interactive Support and Multimedia



Viewing Product Stories



Comparison Mode



Smart Inventory Tracking



UNISIGN SOLUTIONS

FITTING MIRROR

Fitting Mirror is an interactive mirror technology. It allows customers to digitally view the clothes they are trying on and offers additional style suggestions. It enriches the in-store experience, increases customer satisfaction and supports sales. It stands out as a modern and effective solution in the retail industry.



Additional Sales Opportunity



Interactive Touch Screens



Remarkable Advantages



Cross Selling Opportunity

IMPLEMENTED PROJECTS

Explore how our solutions come to life! From retail to hospitality, here are some highlights of our digital signage products in action, delivering excellence and efficiency.







unisign / DISPLAY
TECHNOLOGY



selfservice.unisigndisplay.com



hello@unisigndisplay.com



[unisigns](https://www.instagram.com/unisigns)